



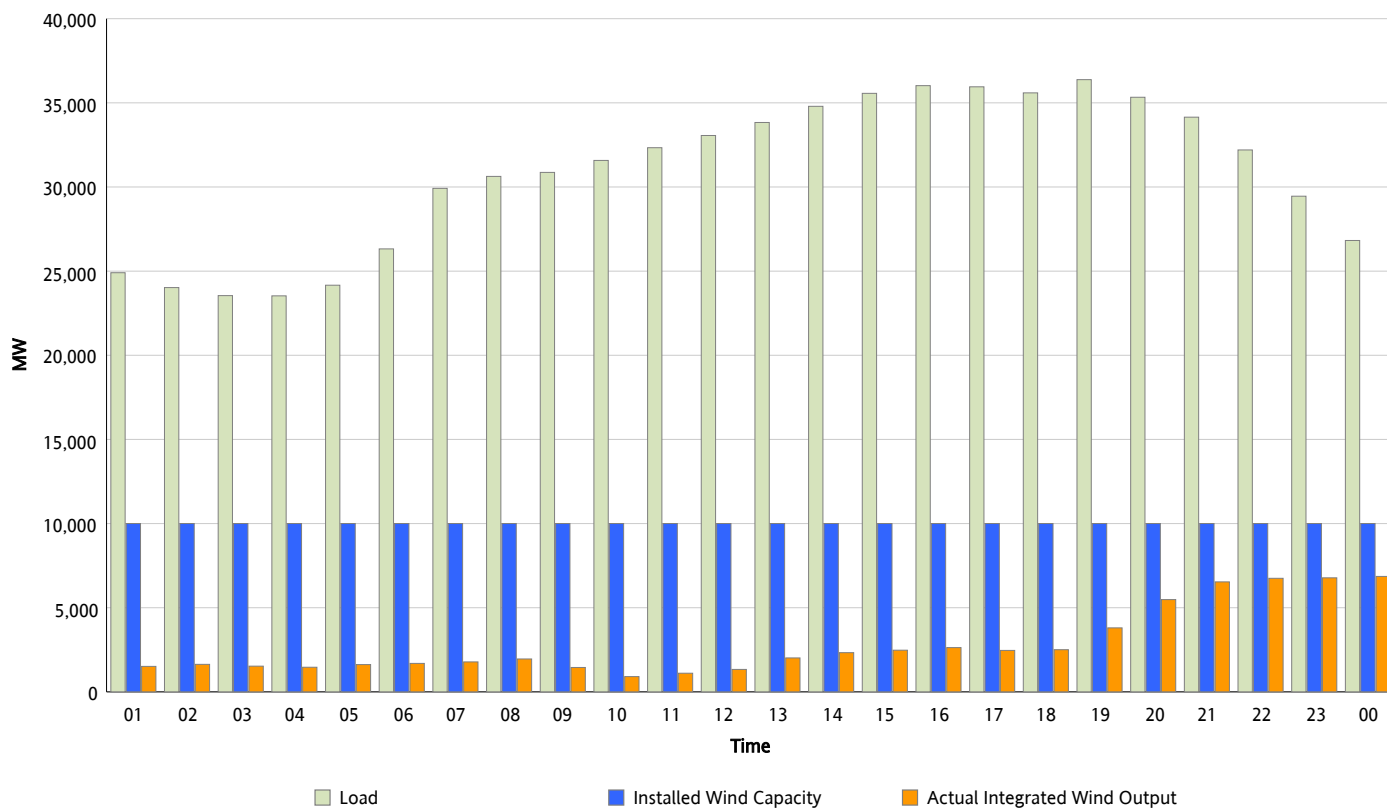
## ERCOT Grid Operations

### Wind Integration Report : 11/07/2012

Peak Load	36,378 MW
Load Peak Hour (HE)	19
Wind Over Peak	3,803 MW
Wind Record 06/19/12	8,368 MW
Max Wind Value*	6,948 MW
Wind Peak Time	23:21
Wind Integration %	25.63 %

#### Hourly Average Actual Load vs. Actual Wind Output

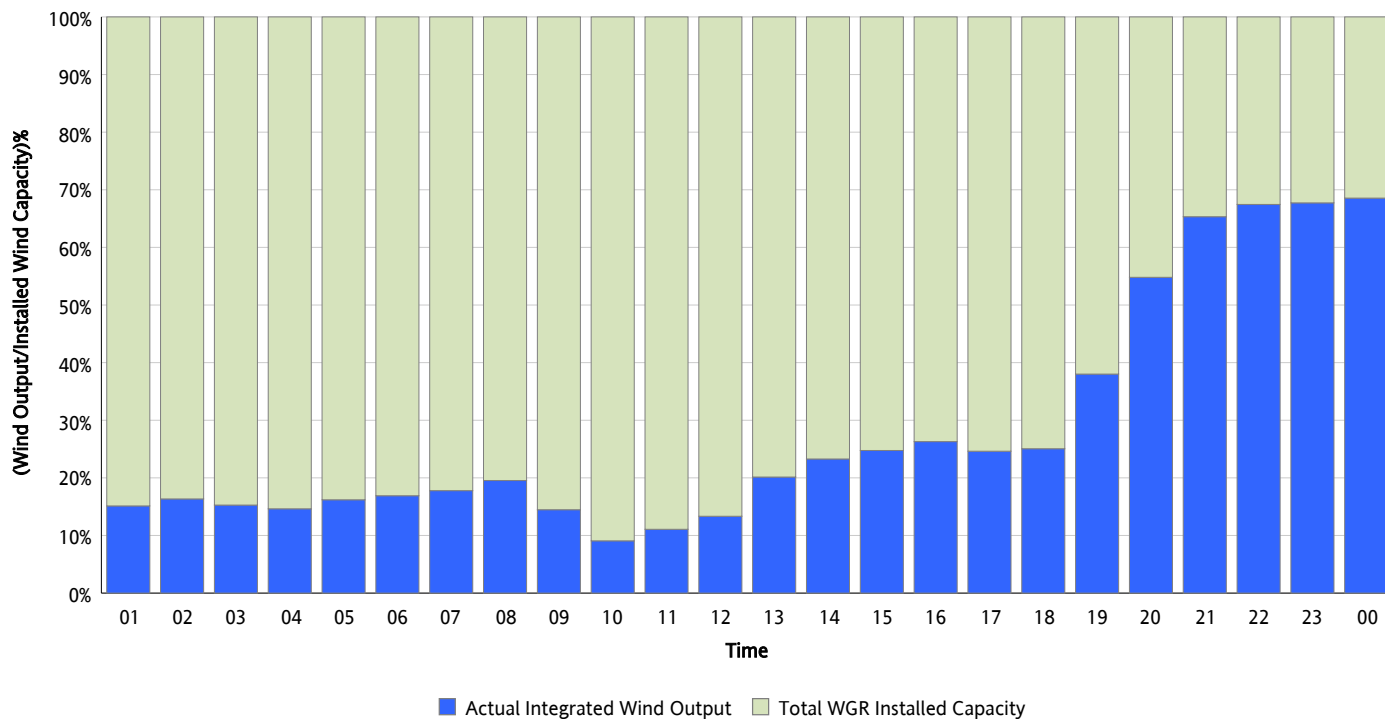
11/07/2012



\* Wind Record and Wind Max represent instantaneous values and the rest of the values are integrated over the hour

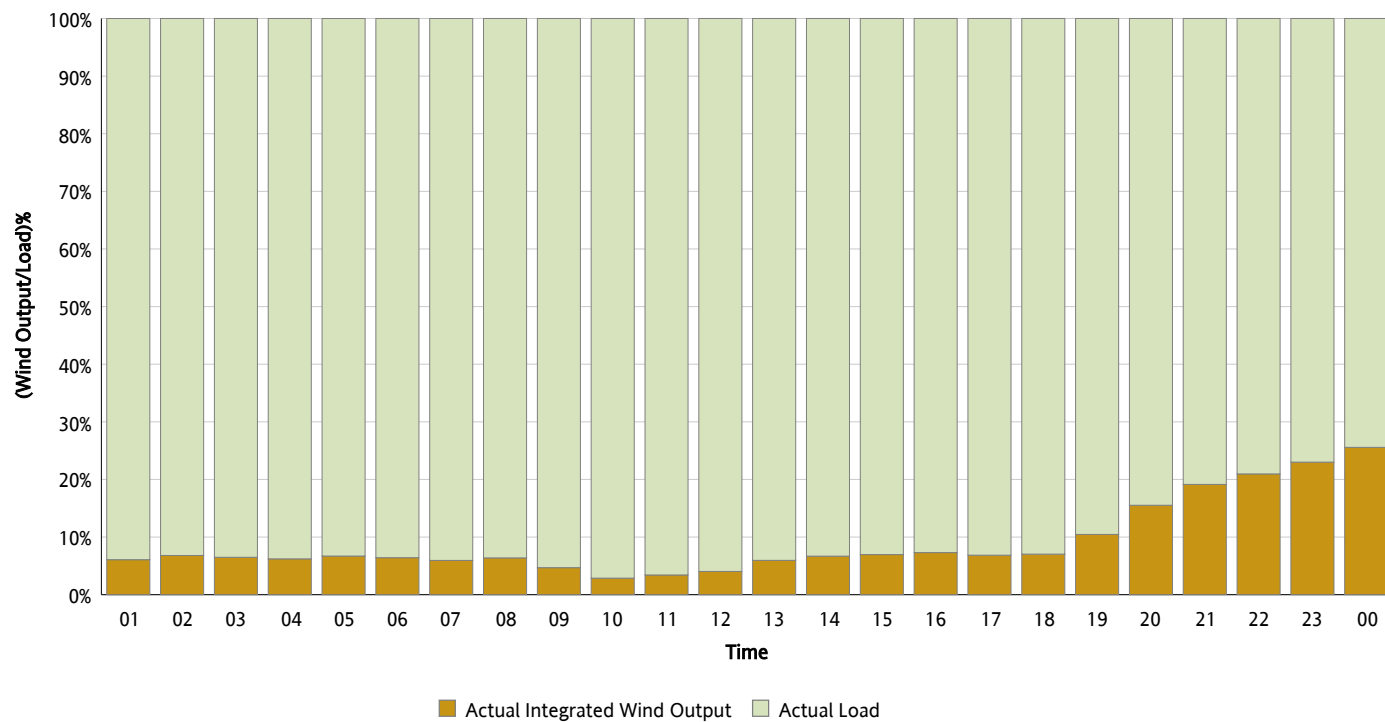
## Actual Wind Output as a Percentage of the Total Installed Wind Capacity

11/07/2012



## Actual Wind Output as a Percentage of the ERCOT Load

11/07/2012



## ERCOT Load vs. Actual Wind Output

10/31/2012 - 11/07/2012

